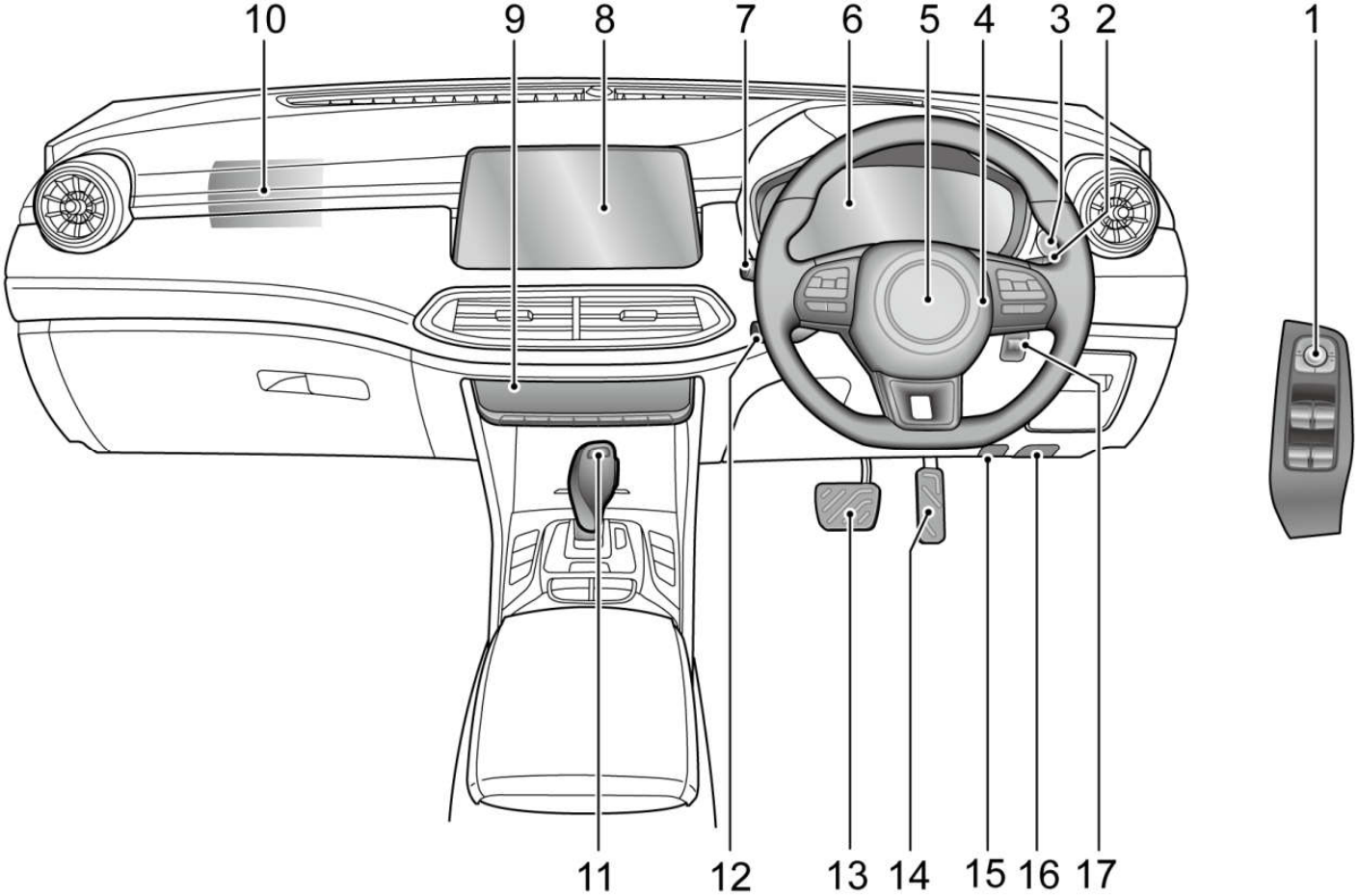


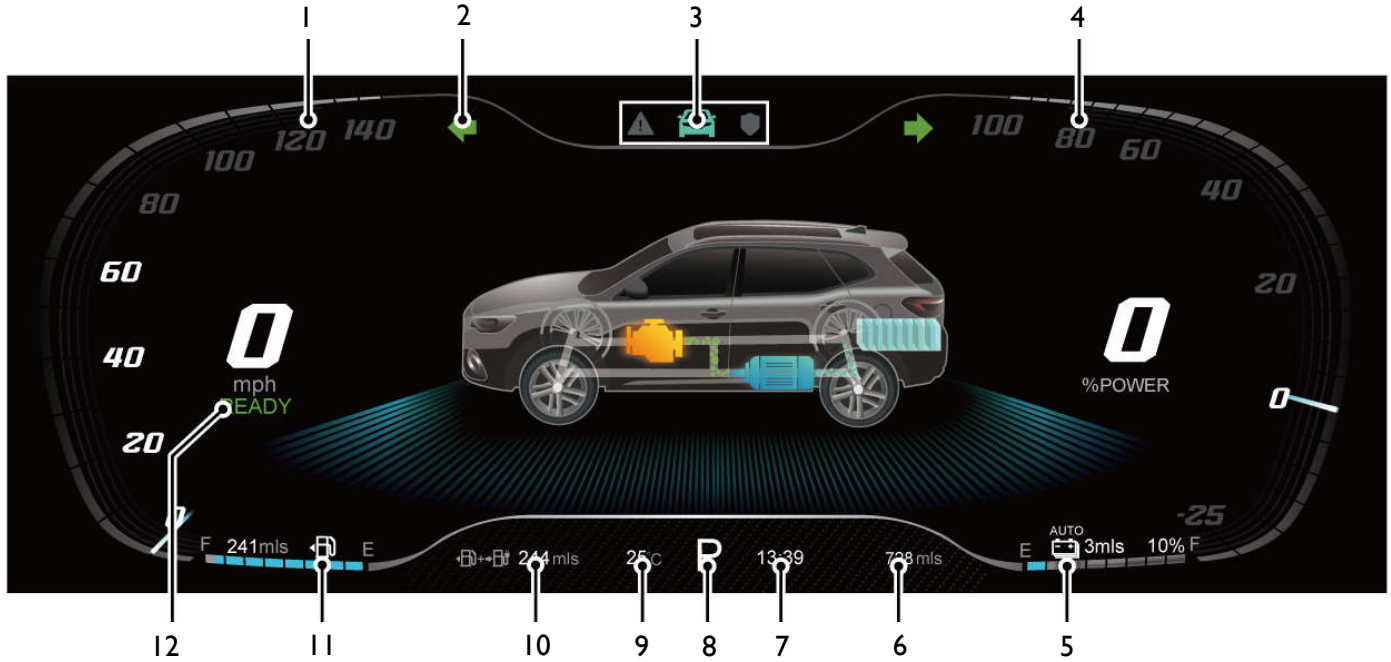
Interior Layout



Interior Layout

1	Exterior Door Mirrors and Power Window Switch	10	Front Passenger Airbag
2	Wiper/Washer Control	11	Gear Shift Lever
3	START/STOP Switch	12	Cruise Control Switch
4	Horn Button	13	Brake Pedal
5	Drivers Airbag	14	Accelerator Pedal
6	Instrument Pack	15	Fuel Filler Flap Release Switch
7	Indicator and Main Beam Stalk Switch	16	Bonnet Release
8	Onboard Infotainment System	17	Headlamp Levelling Adjustment Switch
9	Infotainment and A/C Controls		

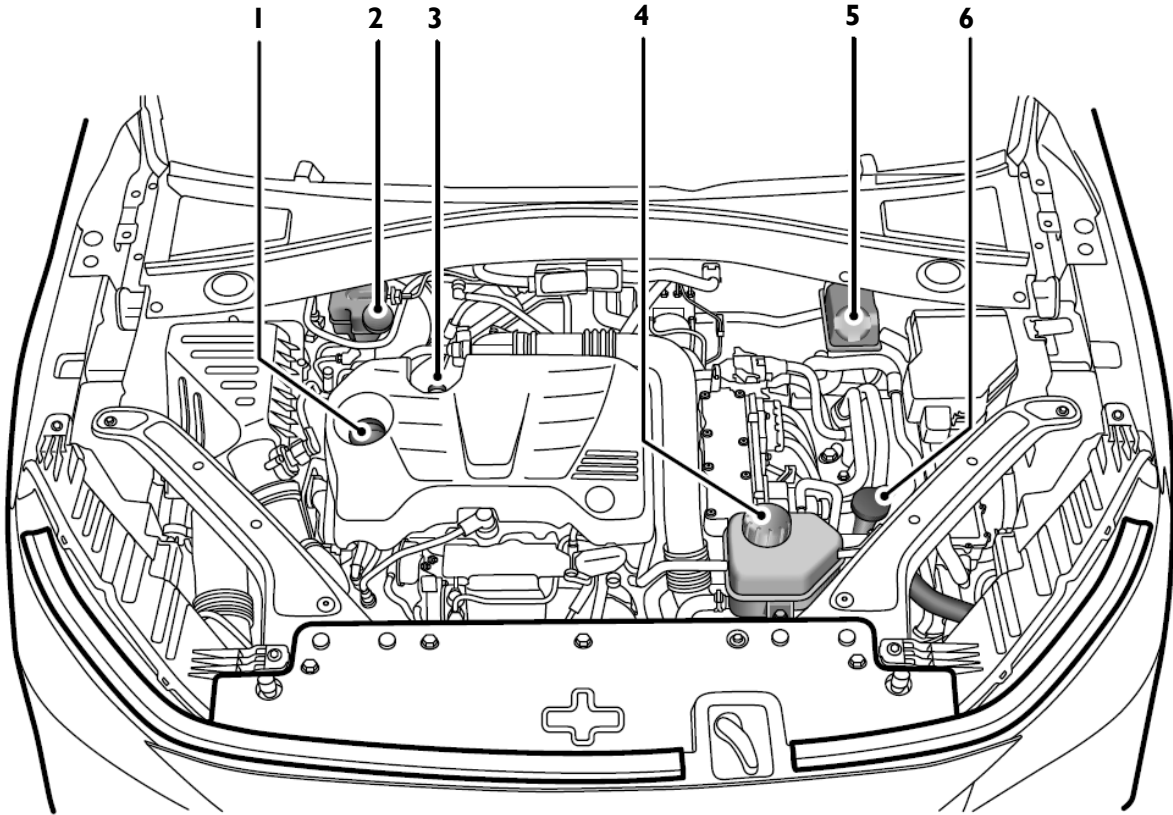
Instrument Pack



- | | |
|--|--|
| 1. Speedometer | 7. Time |
| 2. Warning Lights and Indicators | 8. Gear Display |
| 3. Message Centre | 9. Ambient Temperature |
| 4. Power Meter | 10. Total range to Empty |
| 5. Electricity Meter & Electric Driving Range to Empty | 11. Fuel Gauge & Fuel Driving Range to Empty |
| 6. Odometer | 12. Power System State |

Please consult Owners Handbook for detailed warning light description and function

Underbonnet Locations



1. Engine oil filler cap (Black cap)
2. Brake fluid reservoir (Yellow cap)
3. Engine oil dipstick (Yellow)
4. Engine coolant reservoir (Black cap)
5. Electric drive transmission coolant reservoir (Black cap)
6. Washer fluid reservoir (Blue cap)

Recommended Fluids, Capacities and Pressures

Engine Oil	C5 0W-20	4.0 Litres
Engine Coolant	Glycol (OAT)	5.0 Litres
Electric Drive Transmission Coolant	Glycol (OAT)	2.4 Litres
HV Battery Pack Coolant	Glycol (OAT)	4.4 Litres
Electric Drive Transmission Fluid	Castrol BOT 35I LV	4.4 Litres
Brake Fluid	DOT 4	0.8 Litres
Washer Fluid	ZY-VIII	2.5 Litres
Air Conditioning Refrigerant, g	R1234yf	750 +/- 20
Fuel Tank		37 Litres

Tyre Pressures (cold and unladen)

Front	17"	2.5 bar (37 psi)	18"	2.5 bar (37 psi)
Rear	17"	2.1 bar (31 psi)	18"	2.1 bar (31 psi)

Changing Power State and Push Button Start

Indicator Off (OFF)

- If the button has not been operated and there are no indicators illuminated, the power system is OFF. The powered seats and electric door mirrors remain operational.

Yellow Light (ACC)

- Pressing the START/STOP button without the footbrake being applied whilst the vehicle ignition is OFF will place the system in the ACC state, this will illuminate the yellow indicator in the switch button. The ACC position allows operation of certain ancillaries such as power windows.

Green Light (ON/READY)

- Whilst in the ACC state, pressing the START/STOP button without the footbrake being applied will switch the vehicle power system ON, the green indicator will illuminate. This will allow the remaining electrical systems to operate.



Note: To remove the electronic shift control lever from P the vehicle must be in an ON/READY state and the footbrake applied

Setting the power system into READY mode:

1. Ensure all unnecessary electrical loads (inc A/C) are switched off.
2. Ensure the parking brake is applied.
3. Ensure P or N is selected.
4. Press the brake pedal.
5. Press the START/STOP Switch (do not hold the button in, release immediately).
6. The green indicator will illuminate and READY will be displayed in the instrument pack message centre.

Please consult Owners Handbook for detailed starting description and function

Refuelling

Refuelling

Fuel filler flap is located at the left rear side of the vehicle.

The vehicle uses a high-pressure fuel tank system. The pressure in the fuel tank will be higher than atmospheric pressure.

Before opening the fuel filler flap, you must press the fuel filler flap release switch (located at the bottom right of the driver side lower dash panel) for 2 seconds then release, the system will start the refuelling preparations for pressure relief. Simultaneously the instrument pack will show "Please Wait to Refuel...".

After the refuelling preparations are completed, the indicator on the fuel filler flap release switch illuminates green, the instrument pack shows "Please Refuel". At this time, you can open the fuel filler flap.

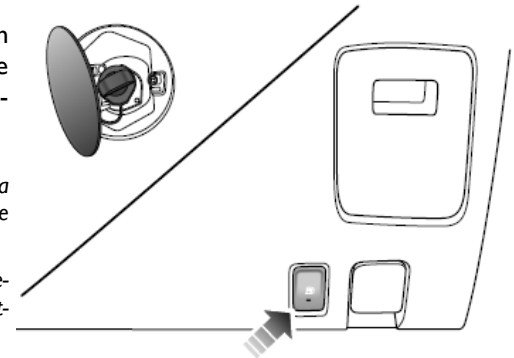
In some rare cases, the fuel filler flap may fail to open within 30 seconds of pressing the fuel filler flap release switch for the first time. This is because the pressure relief process has not been completed. Please press the button a second time.

Note: Shut down the power system before refuelling. If the fuel filler flap release switch is pressed when the engine is running or the pure electric mode is supplied by high voltage, the fuel filler flap will not open, the instrument pack displays "Please Switch the Engine Off While Refueling". In this case, please shut down the engine first and then open the fuel filler flap.

After the refuelling is completed, close the fuel filler flap immediately, the system will automatically lock the flap after it has been closed for about 5 seconds. The indicator lamp on the fuel filler flap release switch extinguishes and the corresponding text message disappears from the instrument pack.

Note: If the fuel filler flap is not closed, when the vehicle reaches a certain speed, there will be a voice prompting the driver, and the instrument pack will display "Fuel Filler Flap Open". Please stop the vehicle as soon as conditions and safety permits, and close the fuel filler flap.

Even if the fuel filler flap has not been closed, the release switch will still need to be pressed before refuelling. The fuel filler flap can only be opened after the refuelling preparations are completed, failure to do so endangers safety.



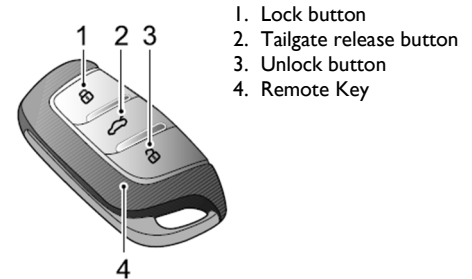
Please consult Owners Handbook for detailed description and function

Locking and Unlocking

When the anti-theft alarm system is not armed or in operation, press the lock switch

- (1) To lock all doors; press the lock switch (1)
- (2) To unlock all doors; press the unlock switch (3)
- (3) To open the tail gate; press and hold tail gate switch (2)

Note: If the anti-theft alarm system is armed, pressing and holding the lock / unlock button will sound the alarm system (panic function).

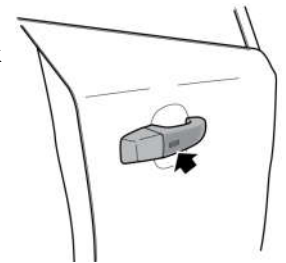


1. Lock button
2. Tailgate release button
3. Unlock button
4. Remote Key

Keyless Locking

Upon exiting the vehicle, press the button on the front door handle once (no need to press the lock button on the key) to lock all doors before walking away from the car, the vehicle will enter the immobilised/alarm armed state.

Note: With the vehicle in locked state, pressing the button on the front door handle, and performing no other operations within 30 seconds, automatically relocks the car.



When the anti-theft alarm system is not armed or in operation, pressing the master lock switch will:

- (1) Unlock all doors.
- (2) Lock all doors.

